
Plot 29

FIVE BEDROOM HOME

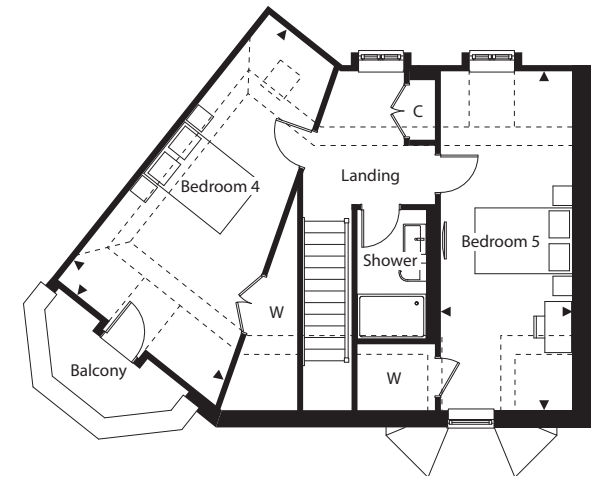
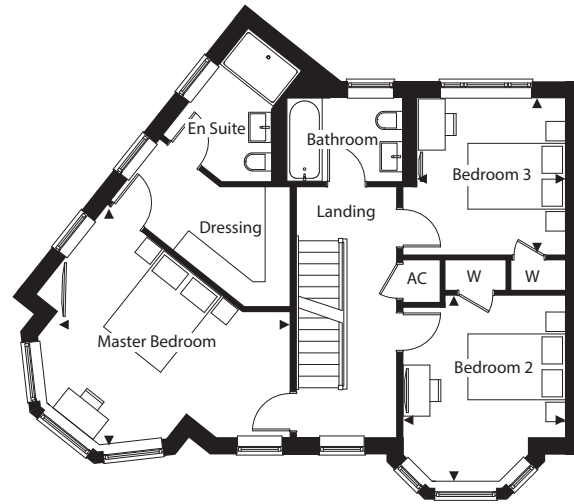
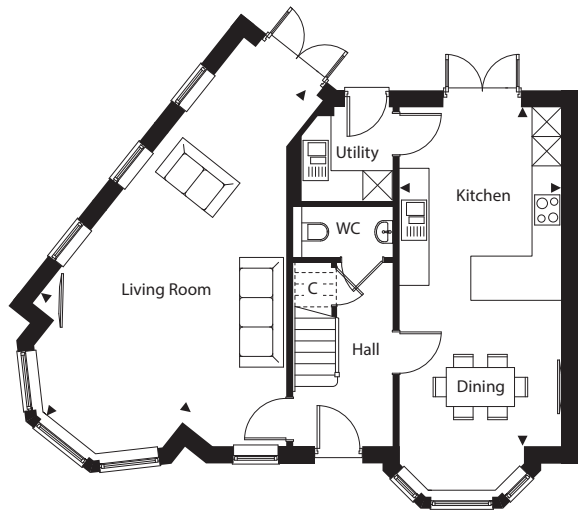


CGI shows plots 29-31





RIVERS EDGE
WIMBORNE MINSTER



Total floor area
198.08m² 2132.11ft²

Ground Floor

Living Room	8.57m x 3.90m	28'1" x 12'9"
Kitchen/Dining	6.93m x 3.34m	22'8" x 10'11"

First Floor

Master Bedroom	4.91m x 4.76m	16'1" x 15'7"
Bedroom 2	3.79m x 3.34m	12'5" x 10'11"
Bedroom 3	3.20m x 3.04m	10'5" x 9'11"

Second Floor

Bedroom 4	6.93m x 4.19m	22'8" x 13'8"
Bedroom 5	6.93m x 2.67m	22'8" x 8'9"

Disclaimer: Computer generated images, floor plans, configuration and layouts are purely indicative, intended for guidance only and should not be relied upon. External finishes may vary, please clarify with your Sales Advisor and refer to drawings in the sales office.