



HEARNES
WHERE SERVICE COUNTS

Ringwood, Hampshire, BH24 1RJ

FREEHOLD

Located in one of Ringwood most desirable roads and with an impressive plot of just under a quarter of an acre this lovely bungalow offers well planned accommodation converted by the current owners to provide four bedrooms over two floors and still with a huge amount of potential due to the size and seclusion of the plot.

The property has two bedrooms on the ground floor, dining and sitting rooms and bathroom with separate WC. The kitchen over looks the garden with door to the side and a good arrangement of units for storage. Furthermore the first floor offers two extra bedrooms, ideal for a growing family.

Outside from the road the property offers an area of walled garden, driveway with parking and leading to the single garage (in need of some repair) the rear gardens offer seclusion and privacy with a large expanse of lawn and various inset mature trees and shrubs. The rear garden measures approximately 125' in length.

Viewing of this property comes highly recommended to appreciate the location, potential and brilliant plot on offer.

Ringwood is positioned on the edge of the New Forest, yet is just a short drive from the coast. The town offers a good range of retail, educational and recreational facilities complimented by a selection of restaurants and cafes. The commuter is well catered for via the A31 and A338 and there are mainline train stations and international airports at Bournemouth and Southampton.

COUNCIL TAX BAND: D New Forest

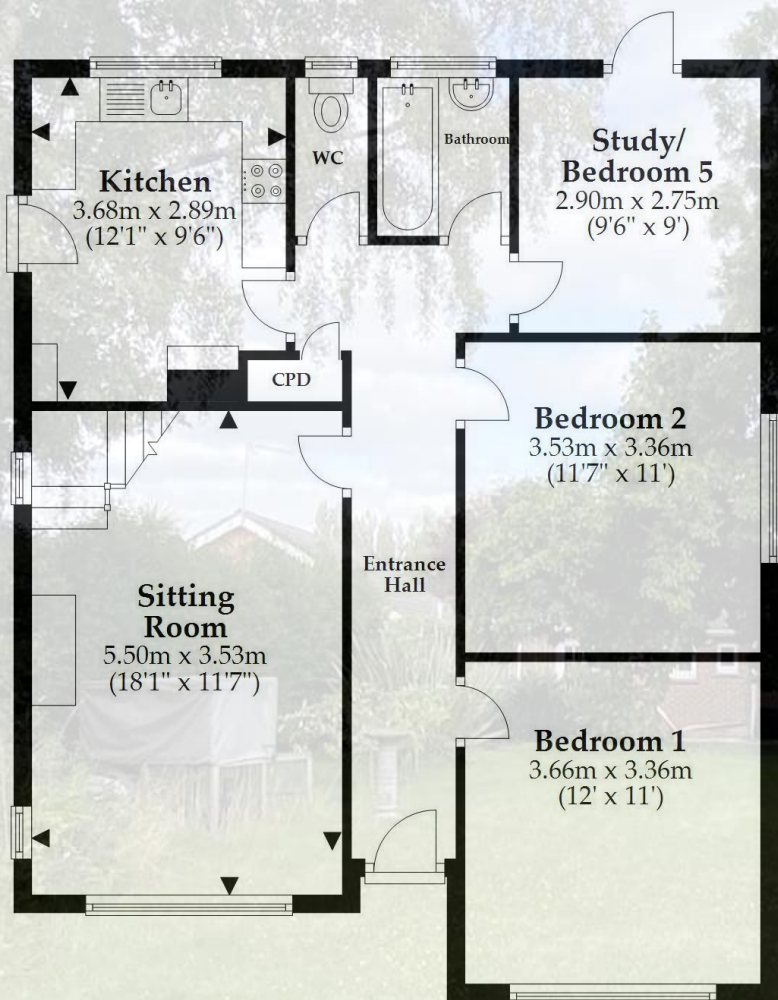
ENERGY PERFORMANCE CERTIFICATE RATING: C

AGENTS NOTE: The heating system, mains and appliances have not been tested by Hearn's Estate Agents. Any areas, measurements or distances are approximate. The text, photographs and plans are for guidance only and are not necessarily comprehensive.



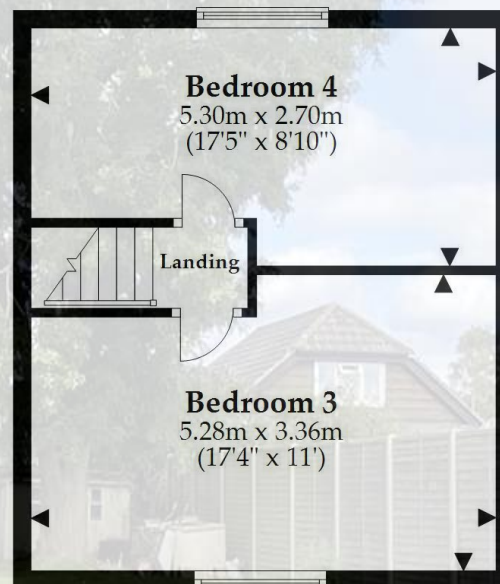
Ground Floor

Approx. 79.7 sq. metres (857.5 sq. feet)



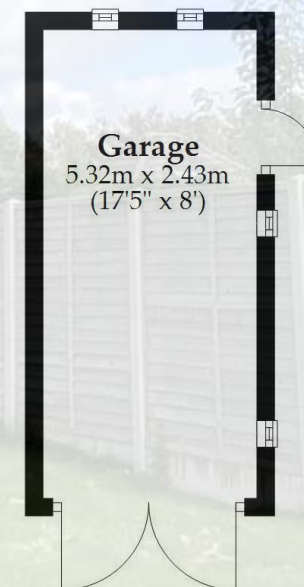
First Floor

Approx. 32.5 sq. metres (350.2 sq. feet)



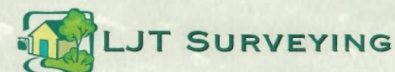
Garage

Approx. 12.9 sq. metres (139.2 sq. feet)



Total area: approx. 125.1 sq. metres (1346.9 sq. feet)

This plan is not to scale and it is for general guidance only. LJT Surveying Ltd Ringwood



52-54 High Street, Ringwood, Hampshire, BH24 1AG Tel: 01425 489955 Email: ringwood@hearnes.com www.hearnes.com

OFFICES ALSO AT: BOURNEMOUTH, FERNDOWN, POOLE & WIMBORNE

