



## **61 & 62 Lansdown Crescent Lane, Cheltenham, Gloucestershire, GL50 2LD**

**£199,995 Asking Price**

The ground floor consists of a one bedroom apartment with a separate living room, kitchen and double bedroom with shower room set off.

Stairs from the ground floor through an individual entrance door take you to the first floor apartment. Here you will find a large double bedroom, bathroom with a full size bath and shower set within and open living room into kitchen. The bathroom and bedroom also benefit from skylights above.

The property is available as vacant possession or with tenants in situ.

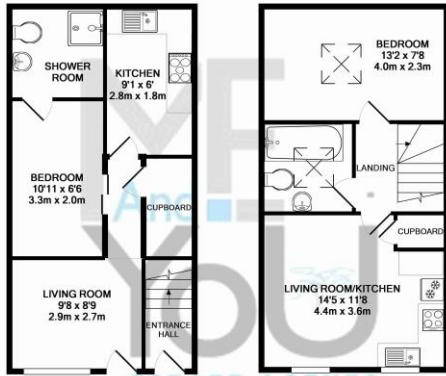
Both apartments together will currently yield 5.8% gross.

For more information and to arrange viewings please contact Mark Ellison on 01242 584007.

Registered Company No. 9423120



Registered Company No. 9423120



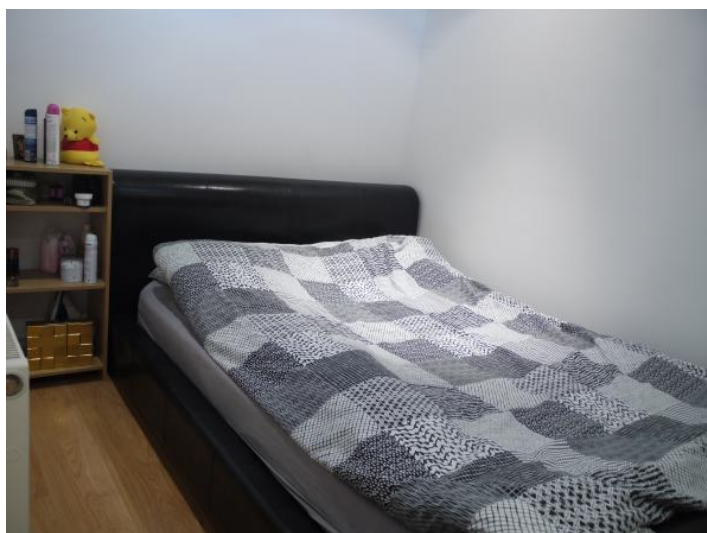
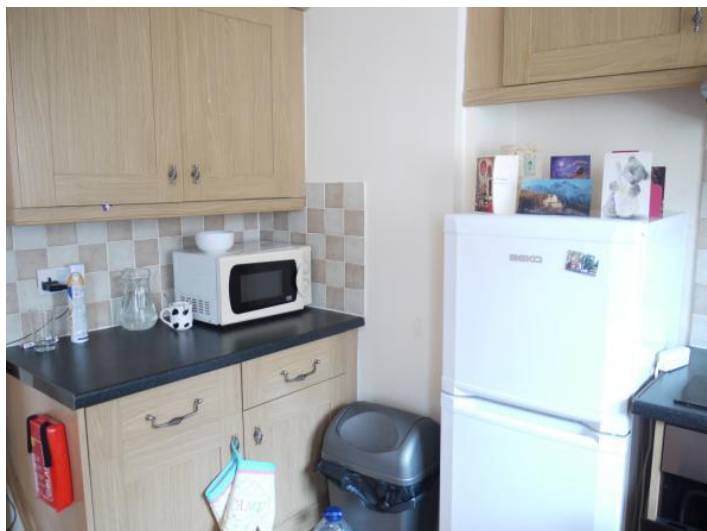


Registered Company No. 9423120

t: 01242 584007 · e: [info@meandyouestateagents.co.uk](mailto:info@meandyouestateagents.co.uk) · 21 Rodney Road, Cheltenham, GL50 1HX

[www.meandyouestateagents.co.uk](http://www.meandyouestateagents.co.uk)





Registered Company No. 9423120